



---

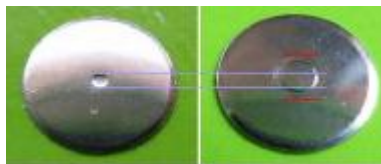
## News Release

### New Circle Metal Domes

Dongguan, Aug 29, 2006 – Best Co., Ltd., manufacturer of snap domes and dome arrays, has developed a new dimple for the circle snap domes.

For the normal circle snap domes (with dimple), the diameter of dimple is usual less than 0.03mm (for  $\Phi$ 5mm dome), and have only one ring. When you press the dome, the contact space is little narrow and small. So that it will require terrible exact location of switch contact on PCB or membrane switch, which increasing the difficult of making PCB or membrane switch. And sometimes, the dome maybe doesn't work smoothly if switch contact in PCB or membrane switch is not in right place.

But for the new dome, the diameter of dimple is nearly 1.00mm (for  $\Phi$ 5mm dome) and has two rings, which increases the contact space greatly, enhances the working stability of domes and decreases the making procedure of PCB or membrane switch. We can check from these pictures show the difference between the normal



dome and the new one. For more, please check our blog

<http://www.metal-domes.com/blog/2006/08/29/new-circle-metal-domes/> .

Right now the new circle snap dome is available in Ni plating with various snap forces. For more information, please contact at [sales@metal-domes.com](mailto:sales@metal-domes.com) now.

---- the End ----

**Best Co., Ltd.**

Tel: 86-769-22057373 Fax: 86-769-85839509 Email: [sales@metal-domes.com](mailto:sales@metal-domes.com)  
<http://www.metal-domes.com> <http://www.metal-dome.biz>